

## USER GUIDE



# wlightboxe

CONTROL LIGHTING FROM ANY PLACE IN THE WORLD



wlightBoxS is a miniature device that allows you to control the brightness of single color LED lighting by using smartphones and tablets.

	Do not connect the device to loads exceeding the recommended values.
	Connect only in accordance with the manual. Improper connections may be dangerous.
	DANGER! Even when the device is turned off, voltage may be present at its terminals. Any works introducing changes into the configuration of connections or the load must be always performed with disconnected voltage (disable the fuse)

### INSTALLATION

1. The device must be installed in a place protected from the inclement conditions and the environment - for example in a flush-mounted box. Remember that metal parts (cables, housing parts) negatively may affect the device signal, and therefore, the user comfort. Due to the voltage necessary for the device work, the connector of the controller should be protected against accidental contacts or short circuits, which could cause an electric shock or equipment damage.

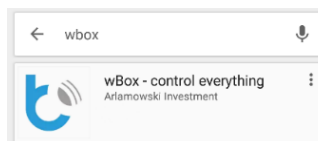
2. Once familiar with the connection diagram, proceed to install the controller. Paying attention to the description of the connectors, connect the power wire. Connect the „+“ wire (usually marked with a dotted line on a black wire or a red wire) and the „-“ (usually black) to the controller. Connect

the light source. In this case LED strip. Connect the „+“ (cathode) to the terminal „+“ and the „-“ (anode) to the output (OUT).

### FIRST USE

3. After making sure that the device is connected properly and near the controller there are no metal objects that could accidentally cause short-circuit, turn on the electricity.

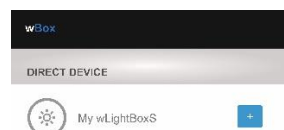
4. Unlock your smartphone or tablet and download the free app wBox. If you have a device with Android system, find the app in the Play Store. For iOS system the application is in the App Store. For Windows Phone, the application is in the Windows Store.



5. Using a mobile phone or tablet, connect it to the device WiFi network. To do this, go to smartphone settings, WiFi networks configuration and find the network called "wLightBoxS-xxxxxxx" where xxxxxxx is the device serial number.



6. Open the wBox application. At the top of the screen will appear the device. To add it to the list, click on the ikon "+" on the right side, next to the name.

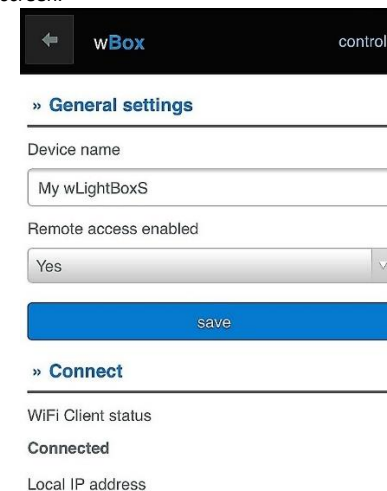


Test the controller's work moving the scrollbar checking from extreme to the intermediate positions. If the light source change its brightness, you can proceed to the next step.

### DEVICE SETTINGS

7. After the first start of the controller, you can proceed to the further configuration. Being connected to the WiFi network "wLightBoxS-xxxxxxx" in the application wBox control panel, select the device, open "Settings" at

the top-right corner of the screen. We recommend changing the device name, user name and the password of WiFi network generated by the device. Keep in mind that changing the network name or password, the device will disconnect, and will require re-connect to the network in your phone or tablet settings. To return to the control, click on „wLightBoxS" at the top-left corner of the screen.



8. You can add the controller to your home WiFi network to control it by this network, or from any place in the World. To do this, turn on the application wBox, go to the device settings, scroll down the screen, select the network name from the list and click "Connect". If is required, enter the WiFi network password. While connecting the device to the home network, the phone may be disconnected from the device network. In that case, you have to re-connect your phone or tablet to the controller network. From now, if the mobile device will disconnect from your home network, the user still has the ability to control the device, the only requirement is access to the Internet on your phone or tablet - WiFi or mobile internet.

For more information visit our website [www.blebox.eu](http://www.blebox.eu) or contact us by email to [info@blebox.eu](mailto:info@blebox.eu). Technical support [support@blebox.eu](mailto:support@blebox.eu).



**Proudly made by:**  
Blebox sp. z o.o.  
Kunickiego 63, 54-616Wroclaw,  
Poland, [www.blebox.eu](http://www.blebox.eu)

**TECHNICAL SPECIFICATIONS**  
wLightBoxS

Electrical parameters			
Supply voltage	12 - 24V	Energy consumption	< 1W
Max current	5A	Max voltage	12 - 24V DC
Output	1	Max load	120 W
Output type	open drain, PWM, low side control	colour mode	MONO
Physical characteristics			
Dimensions	35 x 24 x 15 mm	Protection level	IP20
Housing	made of polyurethane composition not containing halogens, self-extinguishing for Thermal class B (130 °C)	Mounting	in the flush-mounted box, on the lamp housing, directly connected to the LED strip, e.g. furniture
protection	inverted polarization, ESD		
Communication			
Standard	µWiFi, compatible with WiFi	Frequency	2.4 GHz
Transmission	bidirectional, encrypted	API	open
Mode	direct connection (as Access Point), Wi-Fi connection via a standard router, connection with access from any location in the world (requires only access to the Internet)	Compatible devices	Apple iPhone, Apple iPad, iPad Mini, Android, Windows Phone, computers and mobile devices operating a fully HTML5, Apple Watch support coming soon.

