

ISTRUZIONI DI MONTAGGIO

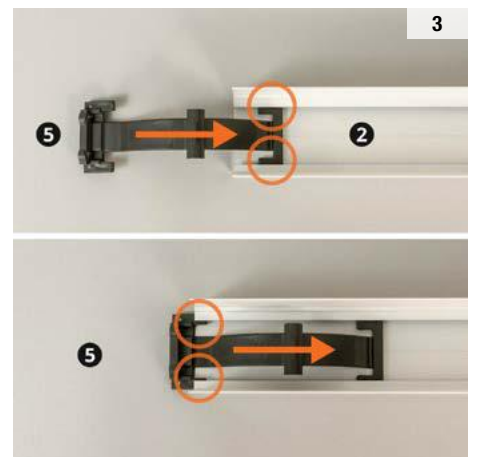
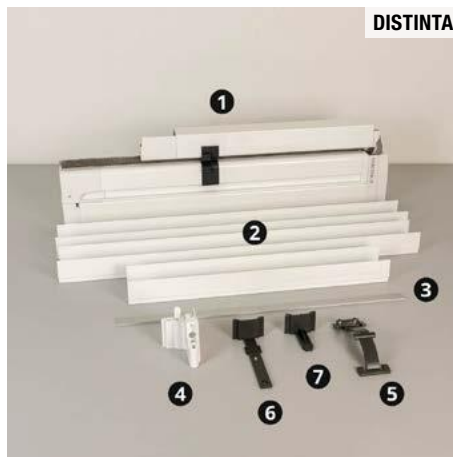
NEOSCENICA®

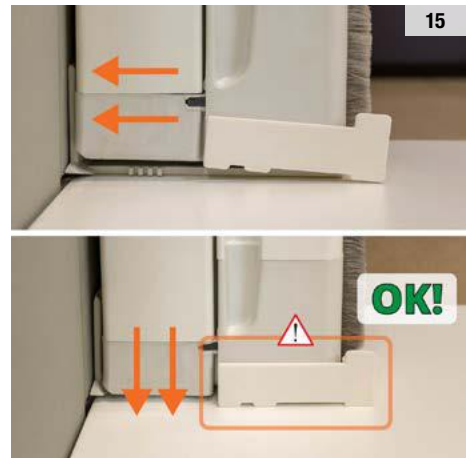
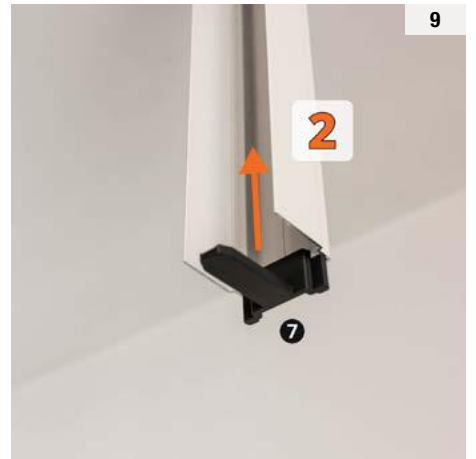
INCASSO

V1 STANDARD – 1 BATTENTE

DISTINTA

- 1 Zanzariera
- 2 Profilo cassa facile (x3)
- 3 Profilo di scorrimento (opt)
- 4 Gruppo di spinta
- 5 Molla di spinta
- 6 Supporto cassonetto
- 7 Centraggio per incasso







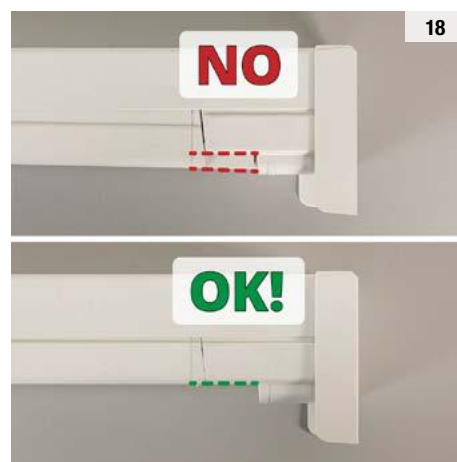
16

Accompagnare la guida senza forzare il movimento.



17

Avvitare completamente la vite.



18



19

Conservare l'accessorio in caso il prodotto debba essere imballato nuovamente.



20

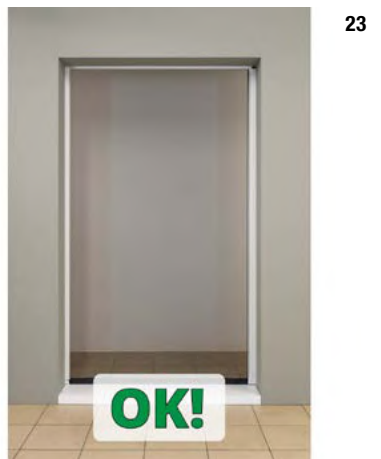


21

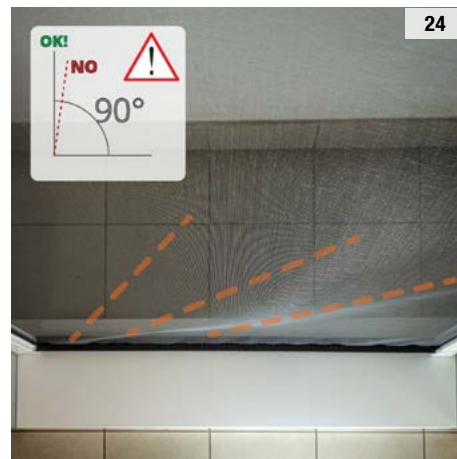
Svitare fino a che la barra maniglia diventa leggermente dura nello scorrimento.



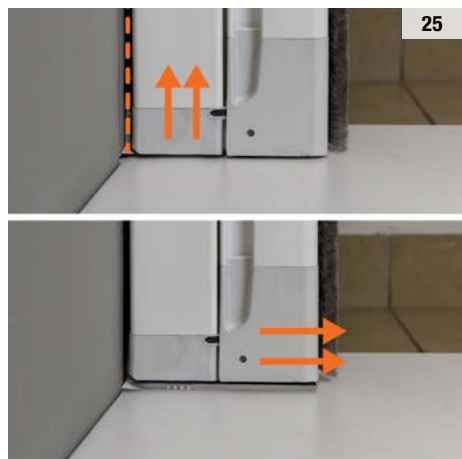
22



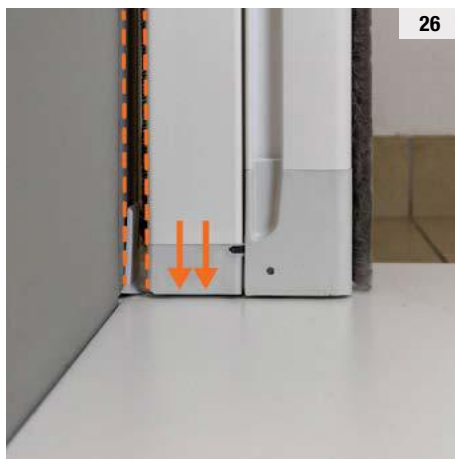
23



24



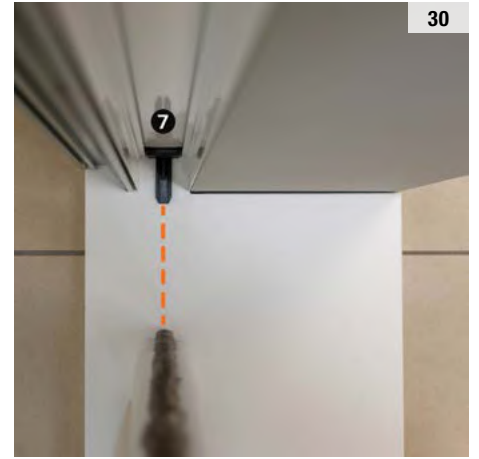
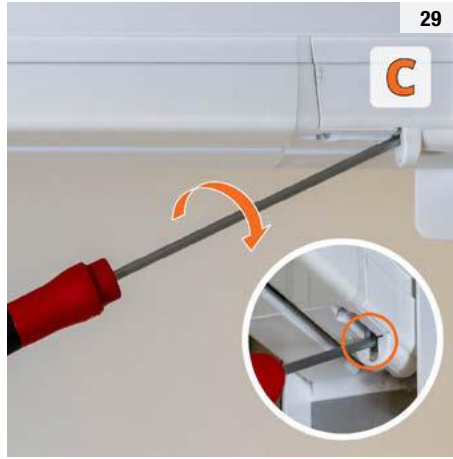
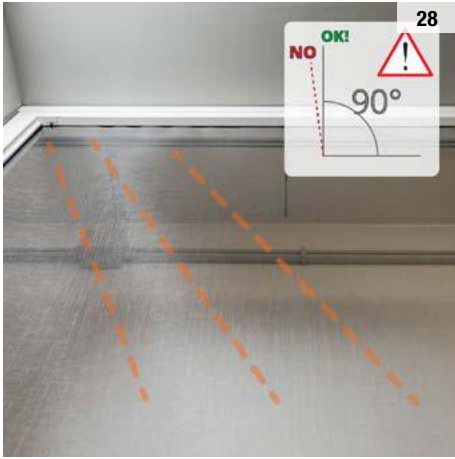
25



26



27



Profilo di scorrimento. Accessorio complementare.
Installazione a discrezione.



Sgrassare e asciugare la superficie di fissaggio prima di incollare il biadesivo: la completa adesione si ottiene dopo almeno 24 ore.